



## Attendance Zone Planning

*Meeting the Challenges of Change*

### **Evaluate, Analyze, and Adapt**

You can easily meet challenges associated with a redistricting plan by using Routefinder Pro to visualize, analyze, and manipulate demographic data and forecast future district enrollment. By creating unlimited “what if” scenarios, you will be able to minimize the effects of redistricting on students, district personnel, and the community.

Redistricting is simplified by using Routefinder Pro to eliminate many of the time-consuming steps involved when new developments or changes in enrollment occur in a school district. Harnessing the power behind this tool can lead to overall political harmony, more equitable and efficient distribution of educational services, and savings on expenses, time, and resources.

**Attendance Zone Planning** or **Redistricting** is a way of life for growing districts across the country. When an area experiences growth, district personnel need a tool to resolve policy issues. In Routefinder Pro, you can evaluate your student population geographically, as well as plot and plan for future growth. By analyzing your existing school placements, Routefinder Pro’s Redistricting tool enables School Boards and Administrators to make policy shifts that will have positive effects on the community, enabling them to adapt to change in the short term and benefit for many years.

transfinder

  
routefinder pro

## Consensus Building Tool

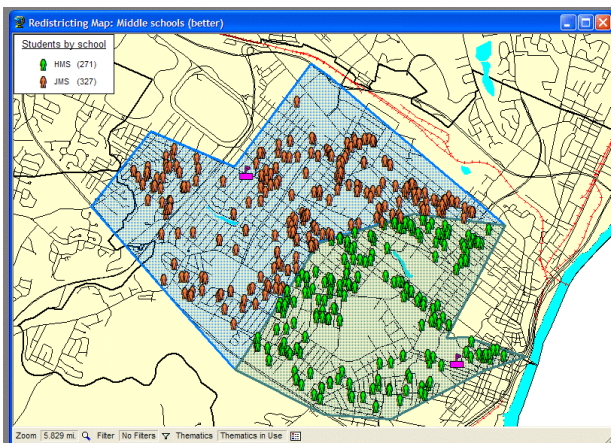
The Redistricting functionality enables you to establish attendance boundary zones that can easily be manipulated to explore attendance options for your district. Routefinder Pro also helps you project future district enrollment and visualize the effects on your current infrastructure.

By enhancing your information control, Routefinder Pro readily displays objective, quantitative data that serves as a catalyst for building a consensus among educational constituents and unites parents, students, teachers, administrators, and the community in future plans for the districts.

## How does this work?

The redistricting map contains color-coded (thematically distributed) students, school locations, school attendance boundaries and enrollment tallies of students enclosed in their respective school zones. With a few clicks of your mouse, school attendance boundary lines can be repositioned and Routefinder Pro will instantly reveal quantitative results for each “what-if” scenario.

You can be very specific about the students you are affecting. For example, you may not want to affect special needs or charter school students. Furthermore, you may want demographic considerations to influence your decisions by, for example, utilizing free and reduced meal data as an index.



Create multiple redistricting scenarios.

## With Routefinder Pro’s Redistricting Tool, you can:

- Analyze the effects of proposed scenarios on transportation operations and costs;
- Generate various reports that will reveal the effects on routes, busloads, and more;
- Develop “what-if” scenarios for transporting students under the new attendance plan;
- Visualize alternatives for consolidating or adding new routes.

You will have the reporting power you need to get the job done.

The following are effortlessly generated to reveal current and projected results:

- Enrollment projection reports;
- Demographic distribution reports;
- Student listing reports,
- Street and address reports; and
- Transportation reports

STUDENT ENROLLMENT BY GRADE					
NUMBER OF STUDENTS	CODE	NAME	GRADE	NO. OF STUDENTS	
925	BMS	Bellevue Middle School	06	237	
			07	283	
			08	405	
933	JEFF	Jefferson Middle School	06	317	
			07	335	
			08	281	
1,099	JFKMS	JFK Middle School	06	427	
			07	439	
			08	233	
TOTAL NUMBER OF SCHOOLS:			3		
TOTAL NUMBER OF STUDENTS:			2,957		

A saved “what-if” scenario, reflects student enrollments by grade. Many reports are available for evaluating other factors, including redistricting impact on transportation.